



Therapeutic  
Inmate  
Management  
Unit

Deputy Ryan McGlashen  
Deputy Jonathan Aguilar



# WHAT IS THE THERAPEUTIC INMATE MANAGEMENT UNIT?

(TIMU)



Our purpose is to manage the most difficult population of incarcerated individuals, those experiencing mental illness.

# WHO ARE WE?



Our unit is comprised of:

- 1 Captain
- 1 Sergeant
- 1 Senior Deputy
- 3 TIMU Deputies
- 2 JBCT Deputies
- 1 EASS Deputy
- 1 Therapeutic K-9
- 16 Psychiatric Housing Deputies
- 12 Psychiatric Housing Sherriff's Service Technicians

## UNIT GOALS:

- Maximize time out of confinement for incarcerated individuals experiencing mental illness.
- Encourage social interaction and larger programs.
- Protect our vulnerable population by customizing housing.
- Monitor incarcerated individuals for potential reclassifications based on a "step-down" program.
- Rehabilitate by increasing socialization and treatment compliance.



# WHERE DID OUR ALLOCATIONS COME FROM?



The TIMU was established through pre-existing allocations:

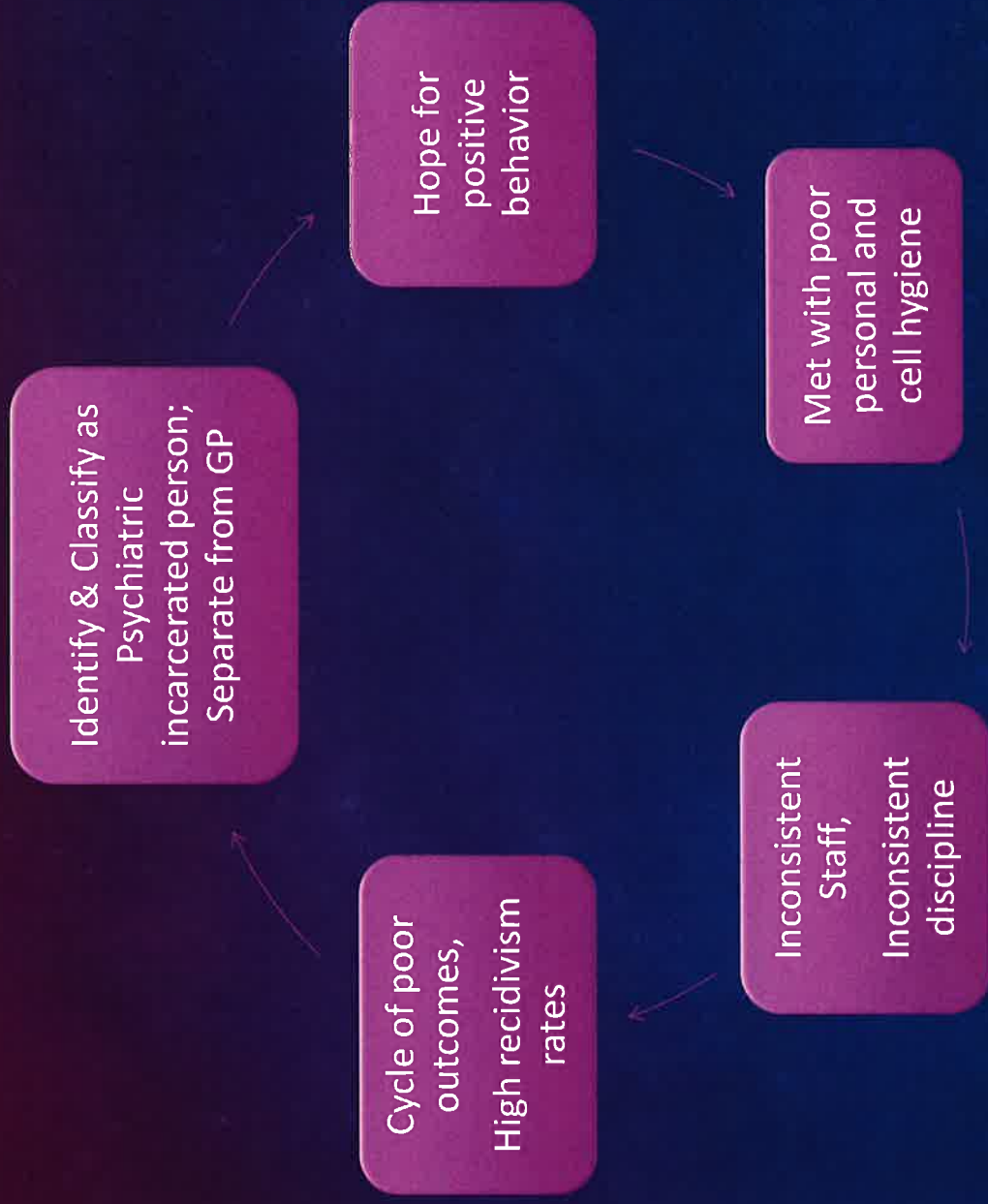
- Two deputies were reassigned from the Classification Unit
- A Sergeant and a Senior Deputy were pulled from deployment.



## COLLABORATION WITH STAKEHOLDERS

- Custody Mental Health / Medical Staff
- Mental Health Court
- District Attorney's Office
- Public Defender's Office
- Behavioral Health
- Hillmont (Mental Health Facility)
- Crisis Intervention Team
- Tactical Negotiations Unit
- Homeless Liaison Unit

# MENTAL HEALTH IN CUSTODY PRIOR TO THE TIMU



# MENTAL HEALTH IN CUSTODY WITH TIMU

Identify and Classify  
as Psychiatric  
incarcerated person,  
Separate from GP.

TIMU gathers  
information from all  
law enforcement  
databases.

Conduct interviews  
with incarcerated  
person, mental  
health staff, medical  
personnel.

Create an  
incarcerated person  
profile.

Assign consistent  
staff for housing.

Creative outlets in  
cells:  
-Chalkboards  
-Tablets / Gardens

Incentivize good  
behavior and  
participation in  
programs.

Tailored housing to  
increase out of cell  
time.

Discharge  
planning with  
behavioral health.



The background is a dark, textured blue, resembling a night sky or a deep sea. On the right side, there is a glowing yellow semi-circle, possibly representing a sunset or a light source. The overall mood is calm and serene.

ARE YOU FEELING RELAXED?

Studies have shown blue and green colors can create a calming atmosphere.

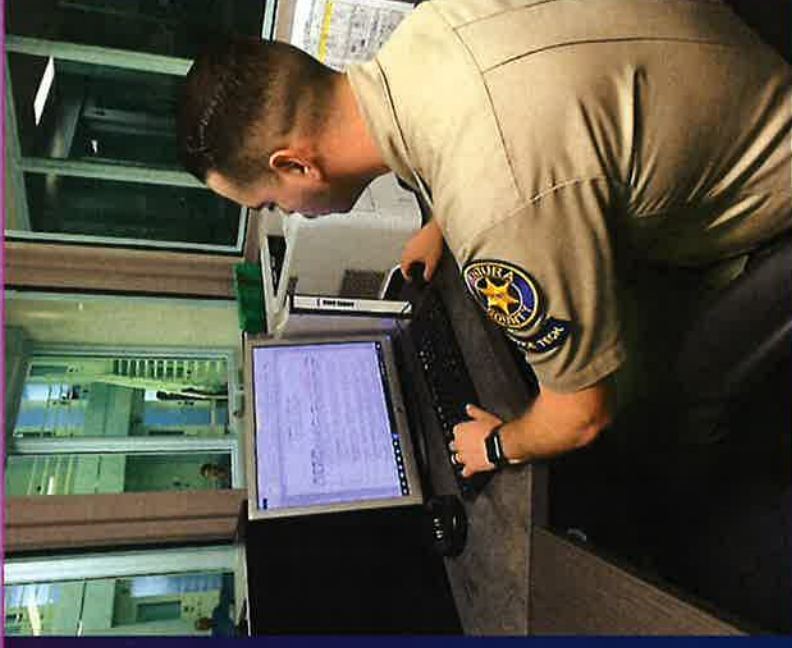
# PSYCHIATRIC HOUSING UNITS



# PSYCHIATRIC HOUSING DAILY OPERATIONS

## Assigned SST & Housing Deputy

- Daily Recaps – Emailed to TIMU
- Incentive program point tracking
- Works closely with TIMU for housing changes and issues
- In-house discipline
- Assists with input for the Step-Down program



## BUILDING RAPPORT WITH EVERYONE



Our housing deputies, SSTs, and TIMU team make active efforts to build a rapport with the psychiatric population which often leads to more compliance with medications and daily operations.

More compliance with staff directly translates to less Use's of force.

# Strategic Housing Layout



Section 1: Single Cell  
One Hour of Dayroom



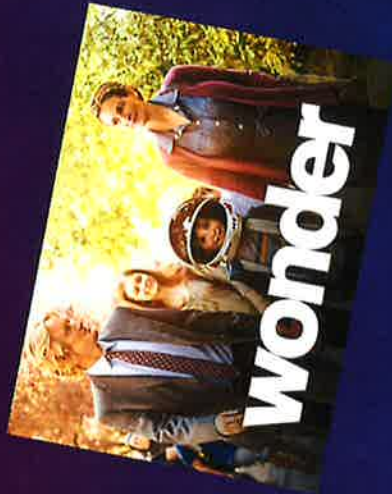
Section 4: All Cells  
16 Hours of Dayroom

## INTERNAL "STEP- DOWN" PROGRAM

Incarcerated individuals who have shown a propensity towards bad behavior are able to see the housing unit who is currently awarded with the most incentives due to good behavior.



# MOVIE DAYS





## Health and Programming Unit



# STATE FUNDED PROGRAMS

Jail Based Competency Treatment



Early Access to Stabilization Services





VENTURA COUNTY  
**BEHAVIORAL HEALTH**  
A Department of Ventura County Health Care Agency



## DISCHARGE PLANNING

In California, a quarter of the 181,000 people experiencing homelessness also have a severe mental illness.

TIMU works closely with Ventura County Behavior Health for program placement of psychiatric incarcerated individuals at their time of release.

TIMU also works closely with regional manager: Forensics Unit.



## OUR NEWEST MEMBER OF THE TIMU

Mellow is spear-heading an all-new animal assisted therapy program. Mellow is used to increase socialization and treatment compliance for those in jail experiencing mental illness.

**Therapeutic  
K-9 Mellow**

Also used as an extra tool for de-escalation.



## MELLOW'S PURPOSE

- Mellow's presence helps to calm those in crisis and helps reduce the anxieties and challenges presented when navigating social settings.
- Lowers blood pressure, heart rate, and anxiety.
- Promotes release of serotonin, dopamine, and oxytocin.
- Alleviates symptoms of PTSD.
- Reduces resistance to therapy.



JUST A FUN  
NOTE TO  
END ON....



PRESENTERS

QUESTIONS /  
COMMENTS?

PLEASE FEEL FREE  
TO REACH OUT TO  
EITHER OF US.



Deputy Jonathan Aguilar & K9  
Mellow

Office: (805)654-3336

[Jonathan.Aguilar@ventura.org](mailto:Jonathan.Aguilar@ventura.org)

Deputy Ryan McGlashen

Office: (805)654-3336

[Ryan.Mcglashen@ventura.org](mailto:Ryan.Mcglashen@ventura.org)